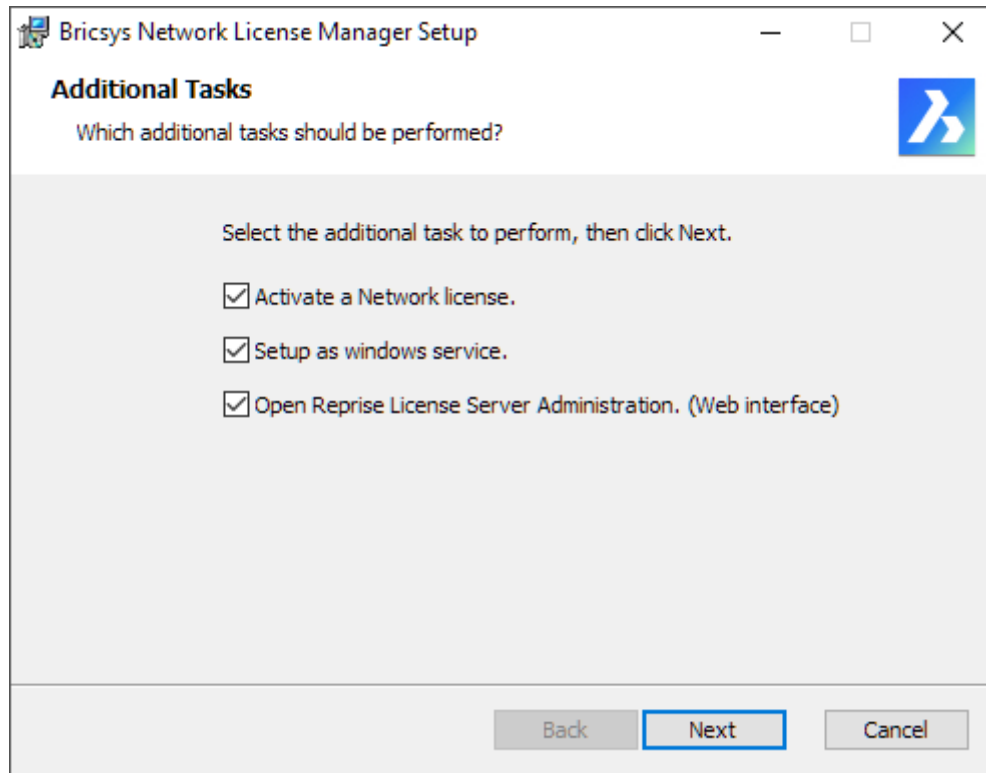


## Installing the Bricsys Network License Manager

1. [Download Bricsys Network License Manager \(Windows\)](#)
2. Double-click the installation MSI file to start the installation.
3. Accept the terms of the **End User License Agreement**.
4. Accept the **Destination** folder or click **Change...** to change the destination folder.
5. Click the **Install** button.
6. Select the check boxes next to the **Additional Tasks** that should be performed after the installation.



- **Activate a Network license**  
After the installation, the **Bricsys Network License Manager** opens and asks you to activate a network license. You can open the Bricsys Network License Manager later by clicking the License activation shortcut in the Start menu.
  - **Setup as Windows service**  
Each time you start Windows, the license server is automatically started as a service. You can do this later with the following command in the elevated command prompt:  
`rlm.exe-dlog rlm.log-install_service.`
  - **Open Reprise License Server Administration (Web interface)**  
After the installation, the Reprise License Server Administration web interface opens. It allows you to manage the network license. You can open the Reprise License Server Administration later by clicking the License Server Administration shortcut in the Start menu.
7. Click Next.



## New installation of the Bricsys Network License Manager

In the **Additional Tasks** dialog, make sure to select all the check boxes (see image above).

## Upgrading the Bricsys Network License Manager

1. Download and install the Bricsys Network License Manager on the computer used as network license server.
2. Make sure to deselect all the check boxes next to the **Additional Tasks**.
3. The installation restarts the license server.

## Installation from the command line

You can also start the Network License Manager from a command window.

By default, the options **Activate a Network license**, **Setup as Windows service** and **Open Reprise License Server Administration** (Web interface) are disabled when installing via the command line. To enable these options, use the respective parameters **ACTIVATELICENSE**, **INSTALLSERVICE** and **OPENWEBINTERFACE**.

For example, **msiexec /qb /i Bricsys-NetworkLicenseManager.msi ACTIVATELICENSE=1 INSTALLSERVICE=1** will show the activation dialog and install as a service without showing the web interface.

### NOTES

- For more options, type: **msiexec /?** at the command prompt.
- On the Microsoft website, you can find [more information](#) about the **msiexec** command.

## Starting the Network license server

The Network license server is automatically started/restarted after the installation. To check if the server has started, open Windows Services and check if the service **RLM** is running. If needed, you can manually start/stop/restart the service.

You can configure the server via the [Network License Server Administration](#).

Once the Network license is activated and the server is started, the server is ready to serve licenses. It is now possible to [use the Network license in BricsCAD on a client computer](#).





## Start the Network license server

The Network license server is automatically started/restarted after the installation. However, you can start it manually if necessary.

In the Start menu, click the **License Server** shortcut.

The server is now started and can be now configured via the [Network License Server Administration](#).

Once the Network license is activated and the server is started, the server is ready to serve licenses.

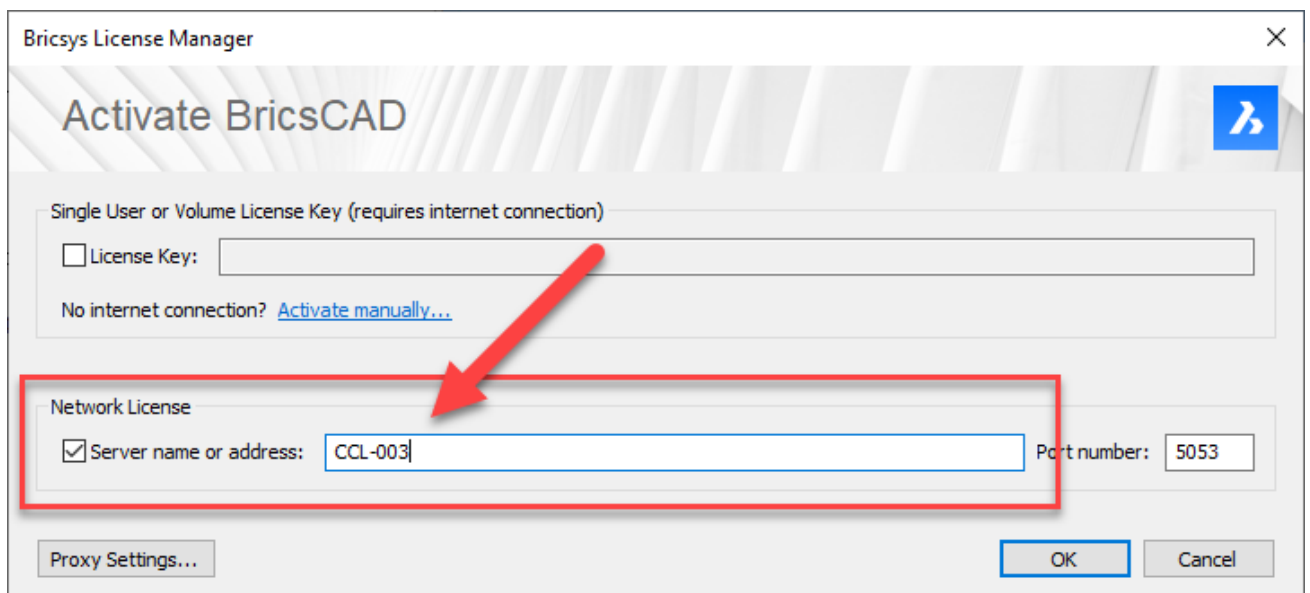
It is now possible to [use the Network license](#) in BricsCAD, on a client computer.



## Using a network license on a client computer

Once the Network license is activated on the license server, it can be used on client computers.

1. Do one of the following:
  - If you start BricsCAD for the first time, click the **Activate License** button in the [BricsCAD Launcher](#) dialog box.
  - If you replace or upgrade an existing license, launch the [LICENSEMANAGER](#) command, then click **Manage License** and click the **Modify...** button.
2. Check the **Network License** option in the **Activate BricsCAD** dialog box.
3. Type the host name or IP address of the license server in the **Server name or address** field.



The screenshot shows the 'Bricsys License Manager' dialog box with the title 'Activate BricsCAD'. It features a 'Single User or Volume License Key (requires internet connection)' section with a 'License Key' field and a link to 'Activate manually...'. Below this is the 'Network License' section, which is highlighted with a red box. In this section, the 'Server name or address' checkbox is checked, and the text 'CCL-003' is entered in the adjacent field. To the right, the 'Port number' is set to '5053'. At the bottom, there are buttons for 'Proxy Settings...', 'OK', and 'Cancel'.

4. (optional) Type the port number in the **Port Number** field.
5. If your computer is connected to the license server through a proxy server, click the [Proxy Settings](#) button to configure the proxy settings for a network license.
6. Click the **OK** button.



## Network license server administration

When the Network license server (also named RLM License server ) is running, you can configure it in the Reprise License Server Administration web interface.

### Opening the web interface

1. If the network license server is not running, click the **License Server** shortcut in the Start menu (on Windows Vista or higher: right-click > Run as administrator).  
A console window opens.
2. Open a web browser.
3. Go to <http://localhost:5054>.  
The **Reprise License Server Administration** web interface opens.

localhost:5054/home.asp

**Reprise**  
SOFTWARE

Logins disabled

**RLM**  
**Administration**  
**Commands**

Choose a command  
from the list below

Status

Shutdown

Reread/Restart Servers

Switch Reportlog

New Reportlog

Switch Debuglog

Edit License Files

Manage Windows Service

Activate License

Diagnostics

RLM Manual...

System Info

About...

**Reprise License Server Administration**  
Copyright (c) 2006-2013, Reprise Software, Inc. All Rights Reserved.

**RLM License Server Administration, v10.1**

This web interface is an integral part of the *rlm* server.

If *rlm* is started without any parameters, the web interface runs on port 5054.  
*rlm* can also be started with the *-nows* option to disable this web interface.  
*rlm* can be started with the *-ws port#* option to specify another port number.

This tool allows you to perform status and administration functions on the RLM server.  
Choose a command from the list on the left-hand side of the window.

Reprise Software, Inc.  
1530 Meridian Ave  
Suite 290  
San Jose, CA 95125  
[www.reprisesoftware.com](http://www.reprisesoftware.com)  
[info@reprisesoftware.com](mailto:info@reprisesoftware.com)

RLM contains software developed by the OpenSSL Project  
for use in the OpenSSL Toolkit (<http://www.openssl.org>)  
Copyright (c) 1998-2008 The OpenSSL Project. All rights reserved.  
Copyright (c) 1995-1998 Eric Young (eay@cryptsoft.com) All rights reserved.

Webserver Copyright (c) 2006-2013 GoAhead Software, Inc. All Rights Reserved.  
<http://www.goahead.com/>

goahead  
**WEB SERVER**

#### NOTES

- Do not use the **Activate License** button!
- To get an overview of all options, click the **RLM Manual...** button on the left or go to the [RLM License Administration Manual](#).





## Checking the license and server status

You can check the status of all network licenses on the server.

1. Click the **Status** button on the left.  
The page **Status for "rlm" on [LicenseServer] (port 5053)** opens.

The screenshot shows the Reprise License Server Administration web interface. The browser address bar shows localhost:5054/home.asp. The page title is "Reprise License Server Administration" with a copyright notice for 2006-2015. The main heading is "Status for 'rlm' on LicenseServer (port 5053)".

On the left sidebar, the "Status" button is highlighted. Below it are buttons for "Shutdown", "Reread/Restart Servers", "Switch Reportlog", "New Reportlog", "Switch Debuglog", "Edit License Files", "«Activate Licenses»", "Diagnostics", "RLM Manual...", "System Info", and "About...".

The main content area displays the following information:

RLM software version	v12.2 (build:2)
RLM comm version	v1.2
debug log file	rlm.log
license files	Bricsys.lic

rlm Statistics	Since Start	Since Midnight	Recent
Start time	12/04 13:01:44	12/04 13:01:45	12/04 13:01:45
Messages	0 (0/sec)	0 (0/sec)	0 (0/sec)
Connections	0 (0/sec)	0 (0/sec)	0 (0/sec)

Below the statistics are buttons for "EDIT rlm Options" and "SHOW rlm Debug Log".

ISV Servers												
Name	port	Running	Restarts	Server Status	License Usage	Debug Log	REREAD	OPTIONS	TRANSFER	SHUTDOWN	ACTIVATE	
bricsys	63063	Yes	0	bricsys	bricsys	bricsys	bricsys	bricsys	bricsys	bricsys	bricsys	





2. Click the **bricsys** button in the **Server Status** column of the ISV Servers table to view the status of the Bricsys Network license.

localhost:5054/home.asp

localhost:5054/home.asp

**Reprise** SOFTWARE

Logins disabled

**RLM Administration Commands**

Choose a command from the list below

Status

Shutdown

Reread/Restart Servers

Switch Reportlog

New Reportlog

Switch Debuglog

Edit License Files

«Activate License»

Diagnostics

RLM Manual...

System Info

About...

### Reprise License Server Administration

Copyright (c) 2006-2015, Reprise Software, Inc. All Rights Reserved.

#### ISV bricsys status on LicenseServer (port 5053)

bricsys software version	v12.2 (build:2)
bricsys comm version	v1.2
debug log file	bricsys.dlog
report log file	_n/a_

bricsys Statistics	Since Start	Since Midnight	Recent
Start Time	12/04 13:01:45	12/04 13:01:46	12/04 13:01:46
Messages	5 (0/sec)	5 (0/sec)	5 (0/sec)
Connections	2 (0/sec)	2 (0/sec)	2 (0/sec)
Checkouts	0 (0/sec)	0 (0/sec)	0 (0/sec)
Denials	0 (0/sec)	0 (0/sec)	0 (0/sec)
License Removals	0 (0/sec)	0 (0/sec)	0 (0/sec)
Current Connections	0		

Enter license password to select license results. Only licenses with matching passwords (or with no passwords) will be displayed above.

License Password:

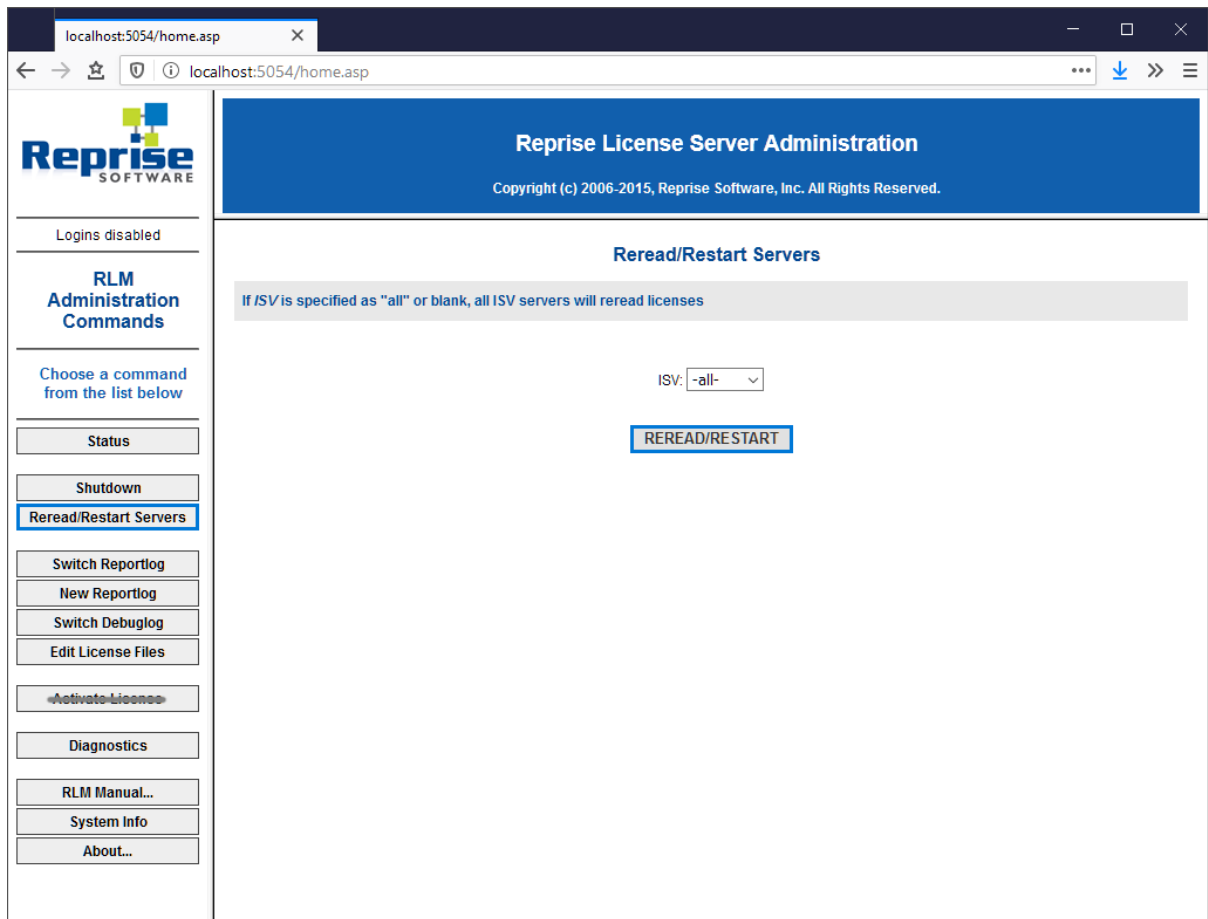




## Rereading the license / Restarting the server

After activating a network license while the server was running, you have to reread the license / restart the server.

1. Click the **Reread/Restart Servers** button on the left.



2. Click the **Reread/Restart Servers** button. The server restarts and rereads the Network license.

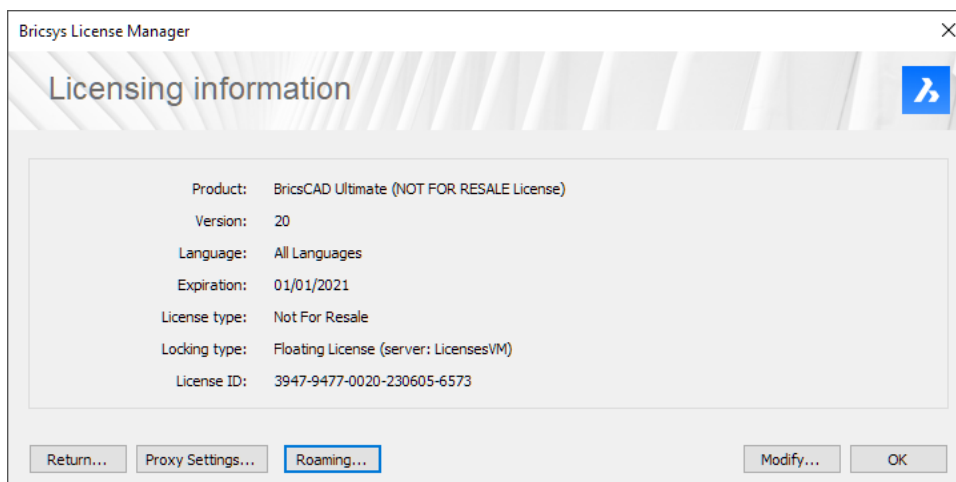




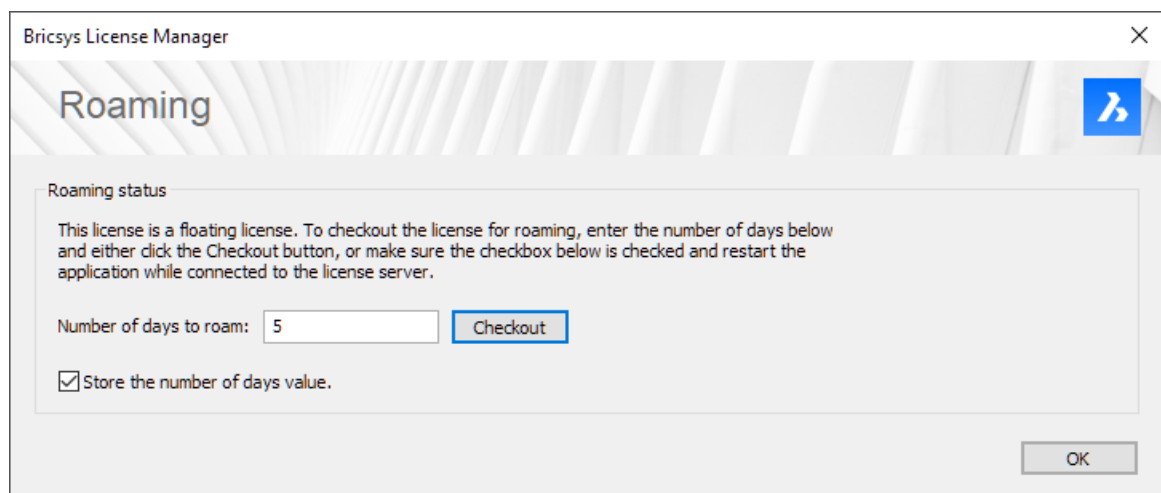
## Roaming a network license on a client computer

A network license can be roamed in order to use BricsCAD without connection to the license server (work outside of the office, at home, ...).

When a network license is used on a client computer, the **Roaming...** button is displayed in the [Licensing Information](#) dialog box.



1. If your computer is connected to the license server through a proxy server, click the [Proxy Settings](#) button to configure the proxy settings for a network license.
2. Click the **Roaming...** button.  
The **Roaming** dialog box opens.



3. Enter the number of days you want to check out the license for roaming and click the **Checkout** button.
4. (Optional) Select the check box if you want to automatically refresh the roaming period whenever your computer is connected to the server.
5. Restart BricsCAD to apply the changes.